

RemoteAccess

Remote Access is a service allowing you to access the University IT system from anywhere with a reliable Internet connection, on almost all devices. It gives you access to a Windows Desktop, called Trinity Desktop, all your files and shared drives, and a wide selection of University Applications.

How to access:

Windows Computer/Laptop – Page 1

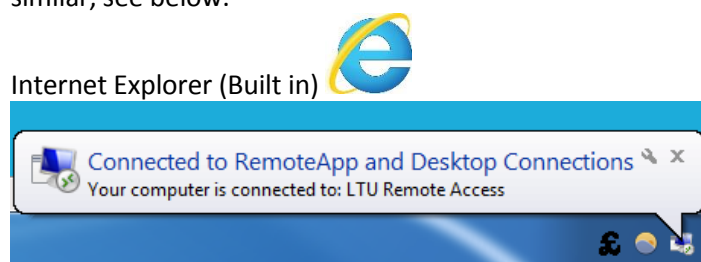
Windows Phone/Android devices – Page 2 & 3

Mac device – Page 4

You can access Remote Desktop Services via an internet browser on a Windows Computer/Laptop. Internet Explorer is the recommended browser as your session should launch immediately.

Microsoft Edge, Chrome and Firefox will work perfectly fine but will download an RDP file which you will need to launch. This should appear at the bottom of your browser or you can find the file in your browser downloads.

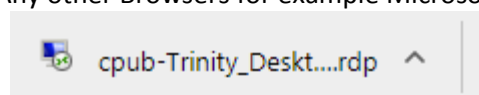
Please take notice of the Icon's with Internet explorer and Microsoft Edge, as they are very similar, see below.



Internet Explorer (Built in)



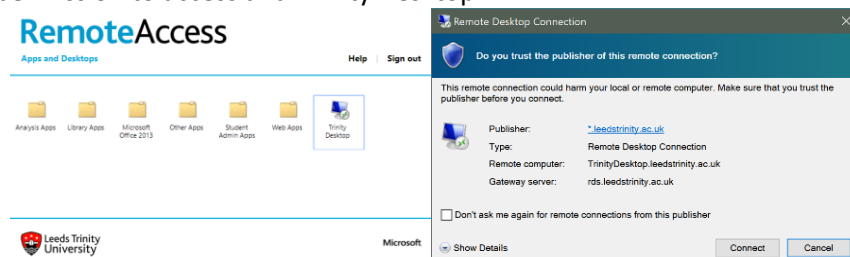
Any other Browsers for example Microsoft Edge/Chrome/Firefox



You can also access these services using the Microsoft remote desktop app available in the Windows Store (this requires windows 8.1 and above), apple app store, and android store.



Go to <https://remote.leadstrinity.ac.uk/rdweb> which will bring you to a login page. Here you just need to enter your university credentials to login. You will then see all apps you have permission to access and Trinity Desktop.

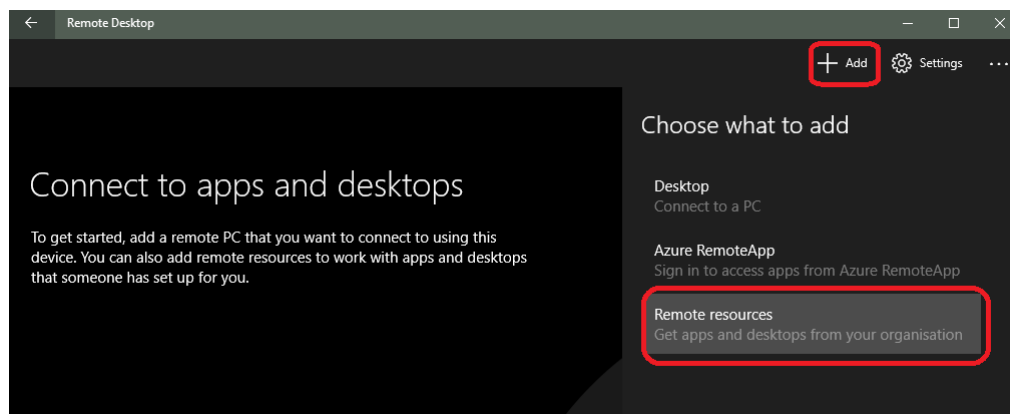


How to set up the app.

Microsoft:

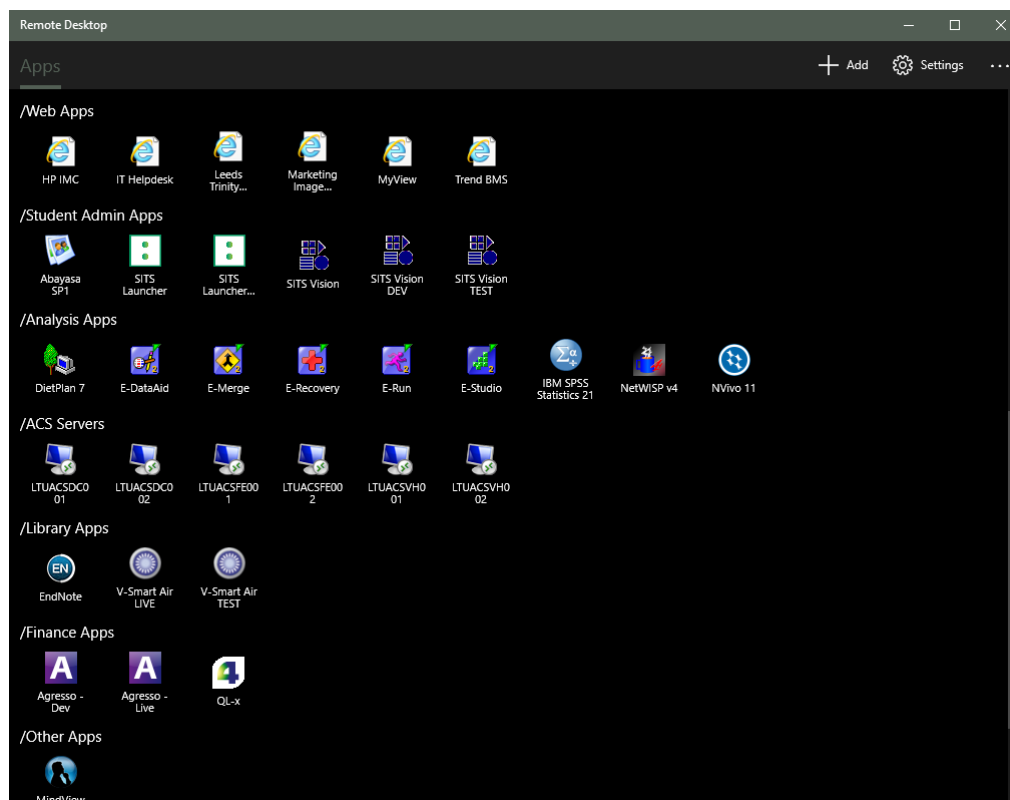
Once the app is installed you can open it from your start menu. Below is what you will see when you first open the app.

You need to click add and then remote resources.



Next you will need to enter a Feed URL and add your university login details. The feed URL you need to enter is <https://remote.leedstrinity.ac.uk/rdweb/feed/webfeed.aspx>. Then enter your University credentials (make sure to include @leedstrinity.ac.uk) and click find feeds.

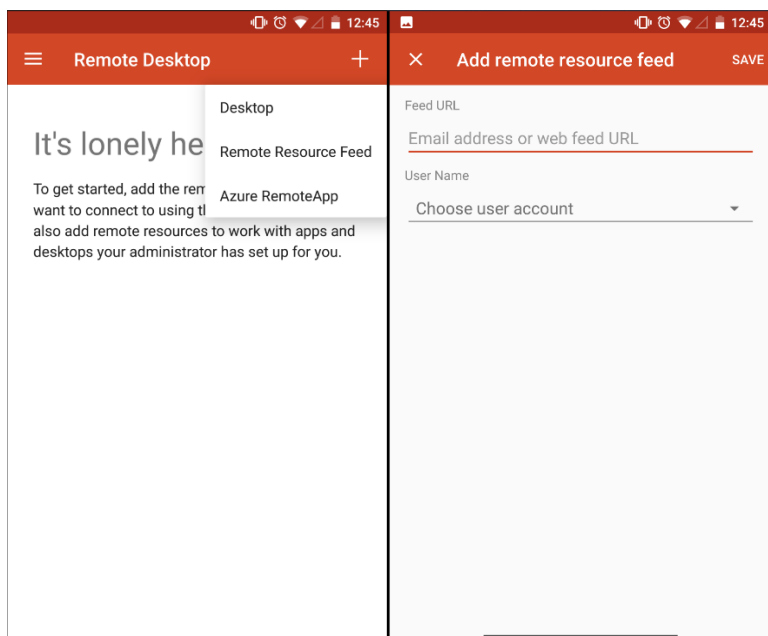
Once this has been setup you will be able to go directly through the app instead of using an internet browser. Again, once logged in you will need all apps you have permissions to access.



Android:

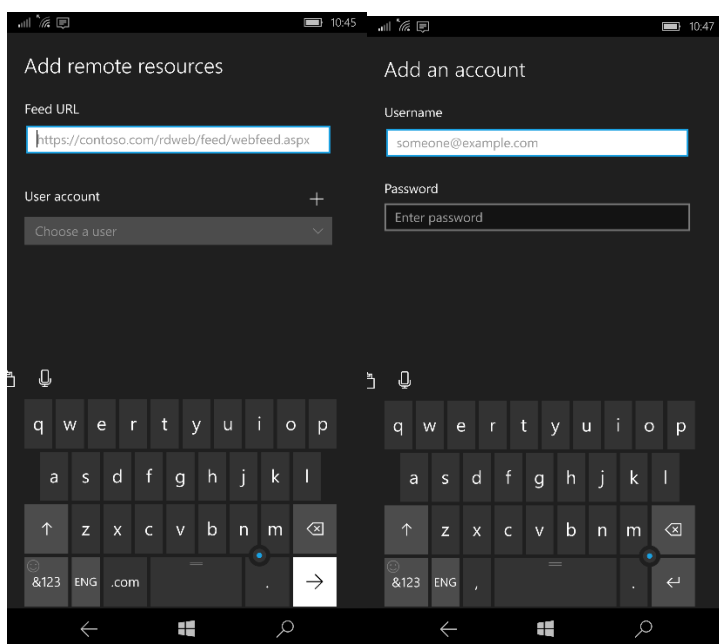
Once you have installed the Remote Desktop App from the Play store you will need to press the + icon on the top right and enter the feed URL: <https://remote.leedstrinity.ac.uk/rdweb/feed/webfeed.aspx>

Then click the arrow next to choose user account and add your university account login.

**Windows Phone:**

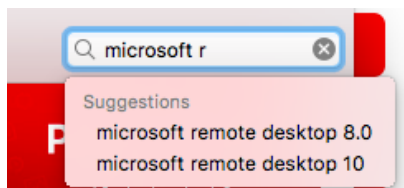
Once you have installed the Microsoft Remote Desktop app from the Windows Store, open the app and enter the Feed URL: <https://remote.leedstrinity.ac.uk/rdweb/feed/webfeed.aspx>

Then click the + icon next to user account and add your University login.

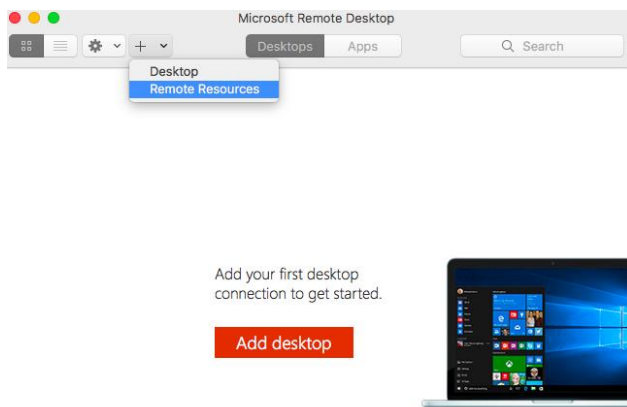


Mac OS/iOS Devices

Download Microsoft Remote Desktop 10 from Apple app store.

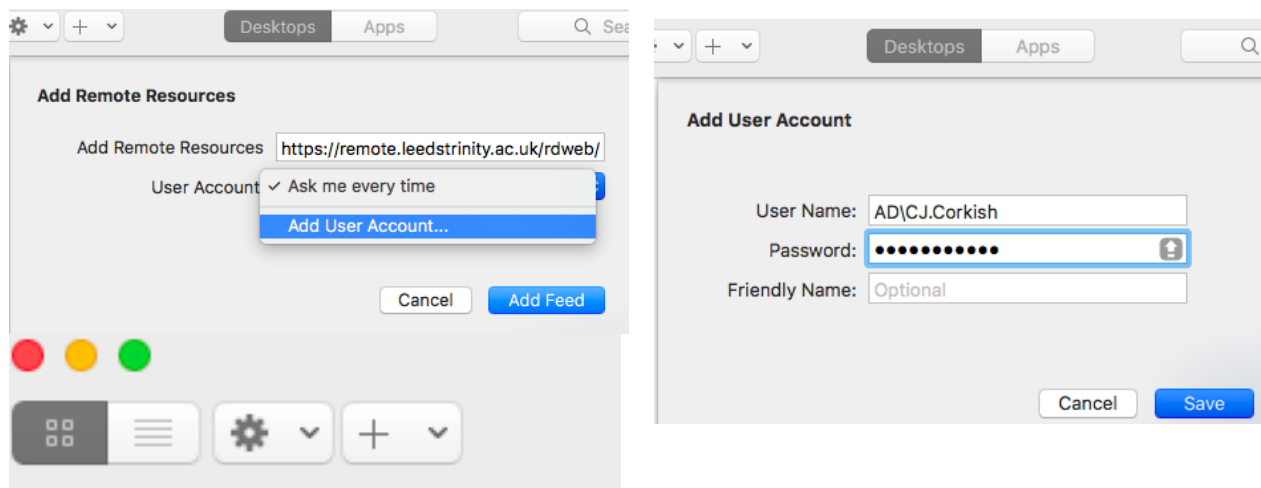


Once installed, click get open the app and click remote resources.



Enter the URL, <https://remote.leadstrinity.ac.uk/rdweb/feed/webfeed.aspx>

Then enter your university credentials and hit add feed. Then close the window.



▼ LTU Remote Access ...



Trinity
Desktop

You will then be able to see all apps you have permissions to access.